

# Domestic Network

## Expanding self customs clearance

### Point1 Self customs clearance

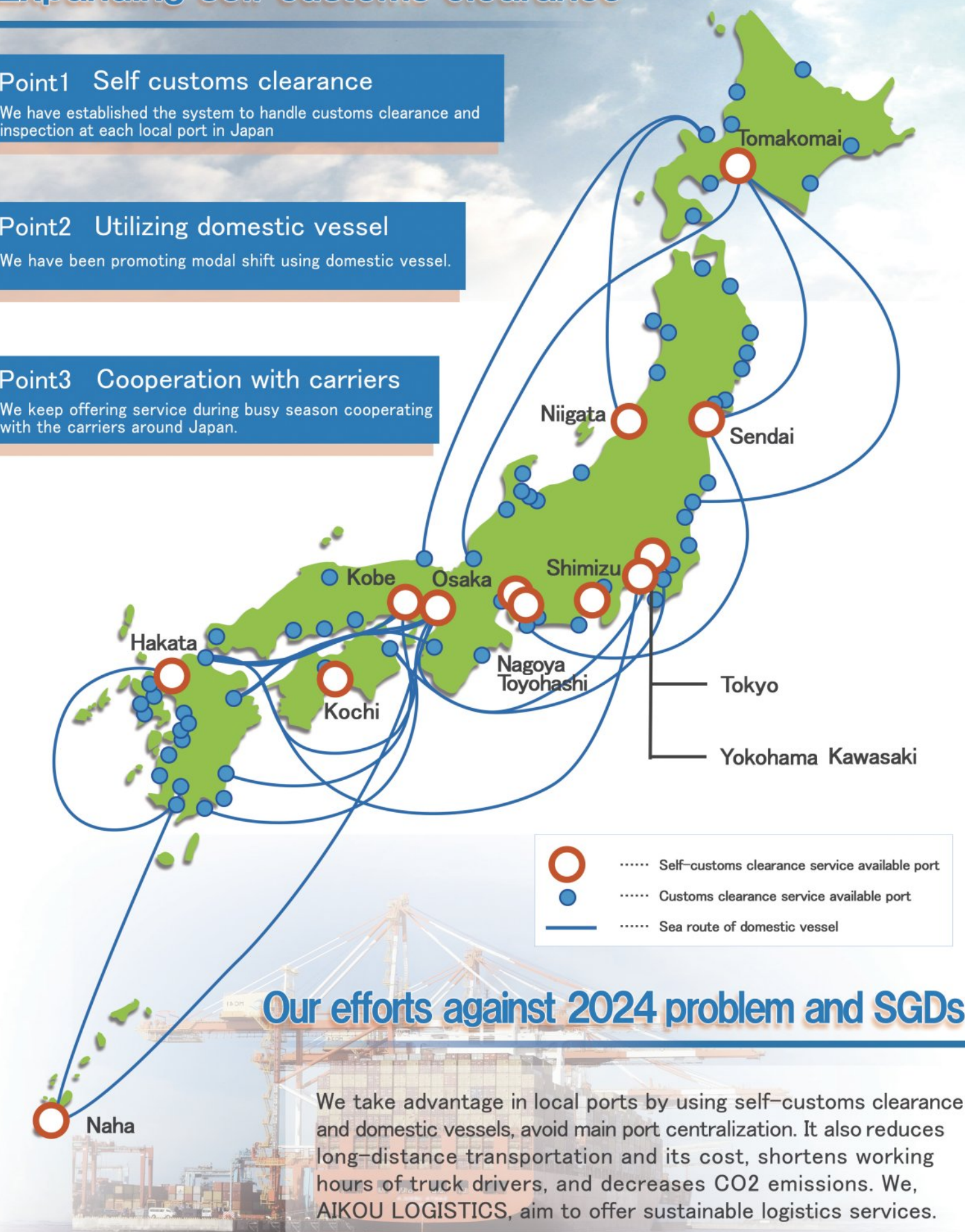
We have established the system to handle customs clearance and inspection at each local port in Japan

### Point2 Utilizing domestic vessel

We have been promoting modal shift using domestic vessel.

### Point3 Cooperation with carriers

We keep offering service during busy season cooperating with the carriers around Japan.



## Our efforts against 2024 problem and SGDs

We take advantage in local ports by using self-customs clearance and domestic vessels, avoid main port centralization. It also reduces long-distance transportation and its cost, shortens working hours of truck drivers, and decreases CO2 emissions. We, AIKOU LOGISTICS, aim to offer sustainable logistics services.



Company name Aikou Logistics Corporation  
Address 【Main office】  
HF Yokohama Yamashita Bldg., 5F, Yamashitachou 89-6,  
Naka-Ku, Yokohama-Shi, Kanagawa-Ken 231-0023 JAPAN  
Tel: +81-45-263-8837 Fax: +81-45-263-8862  
email: sales@aikou-corp.jp <https://www.aikou-corp.co.jp>

【Osaka Office】  
ShinsaibashiTaiyoBldg.3F 301  
MinamiSenba3-11-10, Chuo-Ku, Osaka-Shi, 542-0081  
Tel: +81-6-7878-3798

Established June 2009  
Capital 10 million yen  
President Issei Kobayashi  
Main services International forwarding (Sea and Air), Warehousing, 3PL  
ACP (Attorney for Customs Procedures), Customs Agent  
Agent of Insurance company (Mitsui Sumitomo Insurance Co., Ltd.)  
Domestic transportation (Chartered truck, Container drayage,  
Chartered Trailer, Consolidated Truck)

Related website AIKOU FOOD-LOGI (food logistics) <https://www.aikou-foodlogi.jp>  
Selling in Japan (Introduction of ACP system) <https://www.selling-in-japan.jp>  
Kokusai Butsuryu no Mori <https://kokubumo.jp>  
(knowledge base useful for logistics)  
JFOOD-GLOBAL <https://www.jfood-global.jp>  
(Support to expand your Japan food overseas)



Company Profile  
会社案内

Aikou Logistics  
Corporation



Aikou



We Make Logistics

“Simple”  
“Worldwide Accessible”  
“Secured”

Our Advantages

One-stop logistics service

We offer you total logistics services on a one-stop basis, regardless of the scope of service, domestic or international, air or sea. We propose you optimal transportation method with our partners around in Japan and the world. (We have partners at all major ports in Japan and 20 and more countries around the world.)

Reliable and trustworthy expertise based on our experiences over 60 years

We have been offering logistics services for over 60 years and have expanded our business as customs broker and international freight forwarder. We share the know-how that comes from the above experiences within our company by introducing new systems.

Kind, Polite and Understandable answers

We answer all of your questions kindly and politely, even if you think it is elementary. Our one-stop service helps you to ask us various questions easily. We keep in our mind to explain our service with plain words to understand easily and make logistics “simple”.

Quick response from inquiry to actual logistics support

We can offer you warehousing, transportation, customs clearance and international freight forwarding service by ourselves and it makes us respond to any inquiry quickly.

Direct advice by specialists

We have many specialists in delivery, international forwarding, customs clearance, operation management, forklift and other. They can directly advise you if needed.



Aikou's Overseas Network

Agencies in over 20 countries and regions



Customs Clearance (Import, Export)

From textiles and machinery to food, beverages, and chemicals, our expertise covers an exceptional range of cargo. Even cases refused by other brokers are met with practical solutions and swift action. We also specialize in animal and plant quarantine procedures, and the safe handling of hazardous goods.



International Freight Forwarding (Sea/Air, including intermediary trade)

We can offer you international logistics services regardless of the mode of transport (Sea, Air or Intermediary trade), shape of commodity or trade terms (Incoterms). We can suggest you optimized logistics service with our partners in every domestic port and our agencies around the world.



Domestic Freight Forwarding (Transport, Warehousing/3PL)

We are offering warehousing service including inbound/outbound or stuffing/ unstuffing, not only at inland warehouse but also bonded warehouse. We are also offering variety of transportation modes; containers, chartered/consolidated truck and Railway.



International Trade Support Service

We provide support from both the procedural and market expansion sides:  
1. Determining and processing EPA rules of origin—by certified EPA advisors.  
2. Assisting with imported food compliance. e.g.) standards and additive checks  
3. Expanding overseas sales channels for Japanese food products.



History

2009	June	Company establishment
2009	November	Acquired type 1 cargo-based transportation
2010	October	Acquired customs clearance license
2011	November	Launched international forwarding service
2015	May	Joined JIFFA (International Freight Forwarders Association)
2016	May	Capital increased to 10 million yen.
2019	May	Office relocated (Yokohama port)
2019	June	Launched Attorney of Customs Procedure (ACP) service
2020	October	Merged Trade Express Co., Ltd. (founded in 1956)
2023	June	Opened Osaka office (Chuo ku Osaka)
2024	February	Office relocated (89-6, Yamashita cho, Naka ku, Yokohama)



Key Customers

Okayama Co., Ltd.	CHIKAZAWA LACE CO.,LTD.	HappyJapan Inc.
CARAVAN CO.,LTD.	Dr. NakaMats Innovation Institute	RobotBank
Cleanup Corporation	TOMOE ENGINEERING CO. LTD.	Dashi Corporation Co., Ltd.
Container House 2040.JP CO.,LTD.	Shibamoto & Co., Ltd.	Spigen Korea Co., Ltd.

SERVICE

PROFILE